

Year 3 – Class Activities

Wednesday 15th July

Good morning, Year 3!

We are halfway through our last week – I hope you have enjoyed your activities so far.

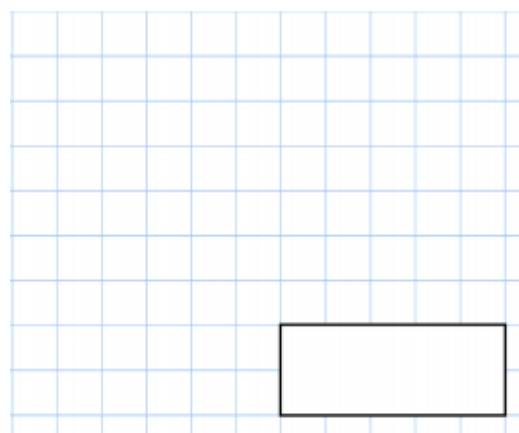
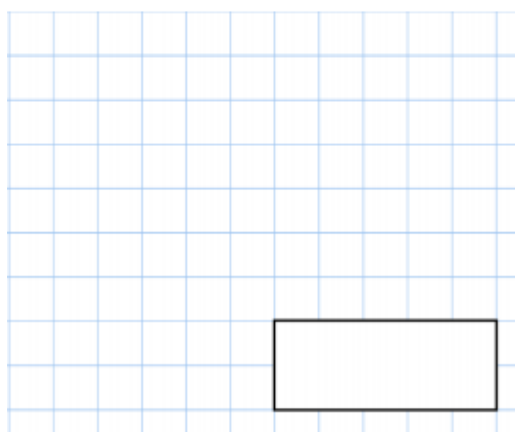
Remember to try your best with the daily activities. Your daily tasks still include: Spellings (via Spelling Shed), MyMaths, TT.Rock Stars and SPAG.com.

Maths



$$\frac{1}{4} \text{ of } \boxed{} = 8$$

$$6 \times 9$$



The increases in bus fares is shown below



Bus Fares

old fare	new fare
58p	67p
74p	90p
92p	£1.10

David's **new** bus fare is £1.10

How much was his **old** bus fare?

Jenson's bus fare has gone up by 16p

How much is his **new** bus fare?



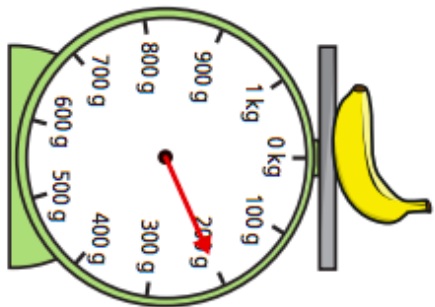
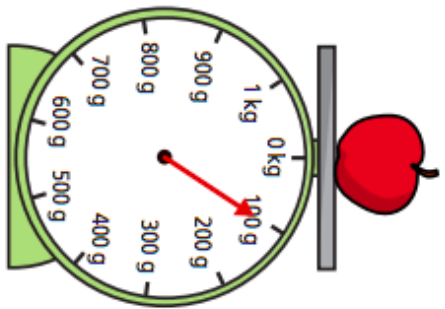
MyMaths

www.MyMaths.co.uk

Use the link above to head to the 'MyMaths' homepage. From there, use our school username and password to enter the site. To find your work, you will need to click 'my portal login' to enter your personal username and password. Your tasks should be under the homework tab. You'll find daily tasks set for the week so you can complete them at your own pace.

You'll find your worksheet below. Today's focus is to add and subtract mass.

1 Teddy is measuring the weight of some fruit.



a) What is the weight of the apple?

 g

b) What is the weight of the banana?

 g

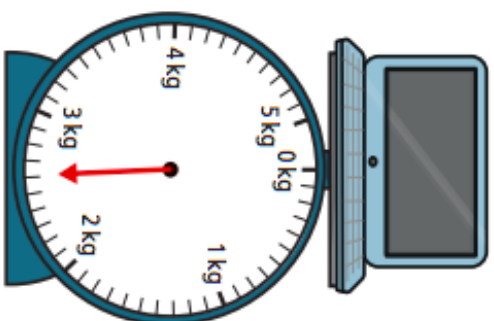
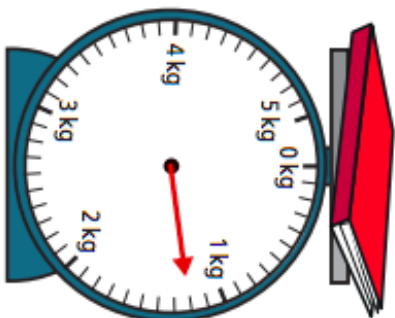
c) Teddy puts both pieces of fruit on the same scale.

What is the total weight of the

apple and the banana?

 g

3 Ron is measuring the mass of some objects in the classroom.



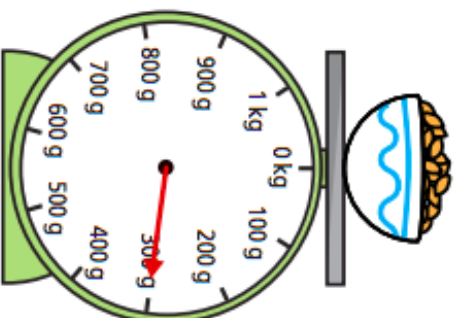
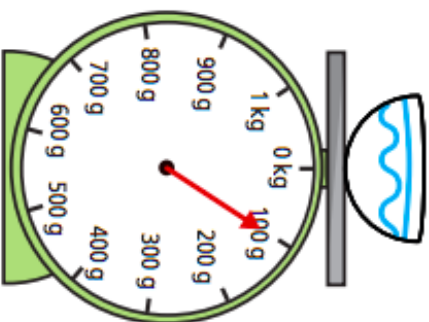
Ron puts both objects on the same scale.

What is the total mass of the objects?

 kg and g

4 Aisha is weighing out some cereal.

First she puts the bowl on the scales. Then she pours out some cereal.



What is the weight of the cereal in the bowl?

 g

2 Alex is measuring the weight of some ingredients.



What is the total weight of the ingredients?

 kg

5 A dog weighs 8 kg and 200 g when it is 8 weeks old.

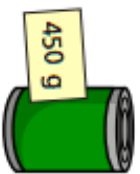
The same dog weighs 12 kg and 900 g when it is 12 weeks old.

What is the difference in the dog's weight between 8 and 12 weeks?

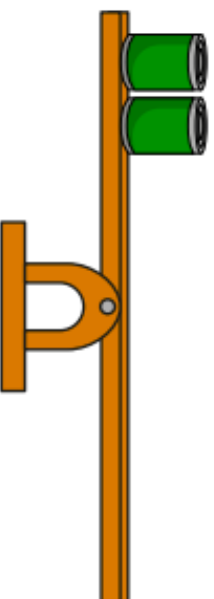
kg and g

6 The mass of a tin is 450 g.

The mass of a book is 300 g.



Draw books on the scales to balance the tins.



7 Complete the number sentences.

a) $1 \text{ kg } 250 \text{ g} + 5 \text{ kg } 300 \text{ g} = \text{ kg } \text{ g}$

b) $3 \text{ kg } 450 \text{ g} + 8 \text{ kg } 120 \text{ g} = \text{ kg } \text{ g}$

c) $15 \text{ kg } 960 \text{ g} - 11 \text{ kg } 270 \text{ g} = \text{ kg } \text{ g}$

d) $36 \text{ kg } 317 \text{ g} - 21 \text{ kg } 199 \text{ g} = \text{ kg } \text{ g}$

e) $1 \text{ kg} - \text{ g} = 200 \text{ g}$

8 Tommy and Rosie are working out the total weight of the box and the suitcase.



The total weight is 5 kg and 1,200 g.

Tommy



The total weight is 6 kg and 200 g.

Rosie

Who is correct? _____

Talk about it with a partner.

English

Story Starter

Read the opening line of the story and continue writing.

*I hadn't seen the door before. It wasn't there last night.
Cautiously, I turned the handle...*

English

Remember to use
your senses!



Transition Task

My School Year Memory Page

This is me!

Greatest school trip

Favourite book I have read

My teacher

Funniest memory

Best outdoor classroom activity

Best classroom activity

New friends

Keeping Active

GoNoodle – Can't Stop The Feeling!

<https://www.youtube.com/watch?v=KhfkYzUwYFk>

Enjoy your dance with the Trolls!

Mrs Ball, Miss Punshon and Miss Cooper xxx