

## Year 4 – Class Activities

Friday 17th July

Good morning, Year 4!

As our school year comes to an end, we want to say well done for being so fantastic in such difficult times. You are all absolutely amazing and we cannot wait to see all of your smiling faces back at school soon. Stay safe over the summer and we will see you back in school in the autumn.

For now, let's enjoy our last day of home learning!

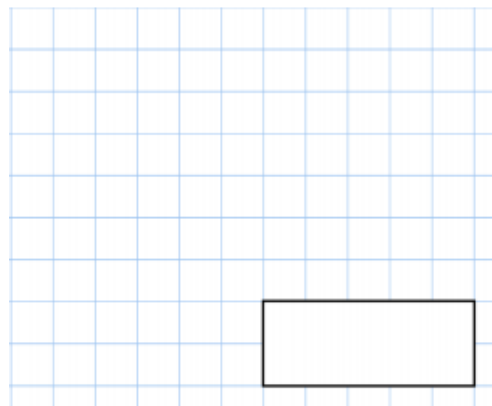
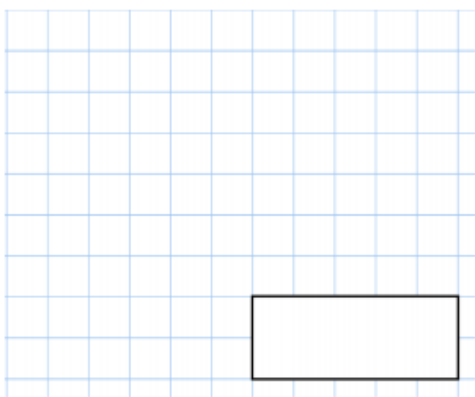
Remember to try your best with the daily activities. Your daily tasks still include: Spellings (via Spelling Shed), MyMaths, TT .Rock Stars and SPAG.com.

# Maths

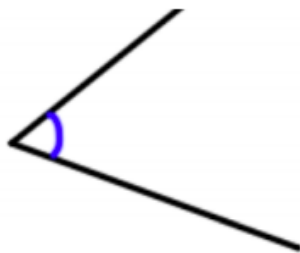
Quick Questions

$80,000 - 7,000$

$4,000 \div 10$



What type of angle is shown?



A song lasts 4 minutes 18 seconds.

How long does the song last in seconds?



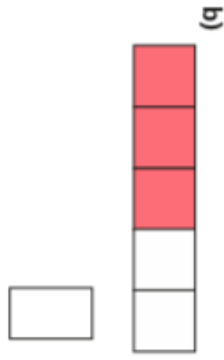
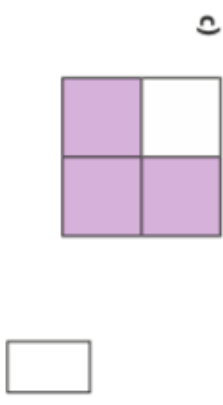
 MyMaths

[www.MyMaths.co.uk](http://www.MyMaths.co.uk)

Use the link above to head to the 'MyMaths' homepage. From there, use our school username and password to enter the site. To find your work, you will need to click 'my portal login' to enter your personal username and password. Your tasks should be under the homework tab. You'll find daily tasks set for the week so you can complete them at your own pace.

# Maths Recap – What is a Fraction?

1 What fraction of each shape is shaded?



3 Circle the unit fractions.

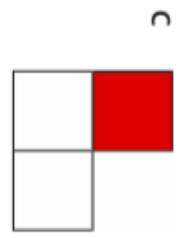
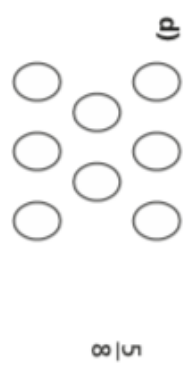
- $\frac{1}{3}$     $\frac{1}{5}$     $\frac{3}{5}$     $\frac{1}{8}$     $\frac{2}{3}$     $\frac{10}{11}$

How do you know which are unit fractions?

4 a) Tick the shapes with one third shaded.



2 Shade each diagram to represent the fractions.



b) Complete the sentences to describe the shapes with one third shaded.

There are  equal parts altogether.

out of  equal parts is shaded.

of the shape is shaded.

5 Draw an arrow to show the position of the fraction on the number line.



6 Draw an arrow to show the position of  $\frac{5}{5}$  on the number line.



What do you notice?

7 Draw four different representations of  $\frac{3}{4}$

8 Amir has drawn some 2D shapes.



a) What fraction of the shapes are triangles?

b) What fraction of the shapes are squares?

c) What fraction of the shapes have four sides?

d) Draw 2D shapes to match the description.

$\frac{1}{5}$  are squares,  $\frac{2}{5}$  are triangles,  $\frac{3}{5}$  have more than 3 sides.

Compare shapes with a partner.

What is the same about your shapes? Is anything different?

# Incredible Invertebrates!

English

Invertebrates are a species of animal that do not have a back bone. Mammals, amphibians, reptiles, fish and birds do not fit into this category because they all have vertebrae (spinal bones), but these animals make up less than 4% of all the animal species on Earth. This means that around 96% of animal species alive are invertebrates. These include marine invertebrates and molluscs, such as sponges, jellyfish and oysters, as well as crustaceans and insects, such as crabs, shrimp and butterflies.

The largest invertebrate ever recorded was a giant squid that measured 13m long. The smallest invertebrates are so tiny that they cannot be seen by the naked eye.

Read the text then answer the questions:

1. Write a short definition of the word 'invertebrate'.
2. What percentage of animals on Earth actually have spinal bones?
3. Who do you think this information is for?
4. Write two questions that you could find the answers to in this text.

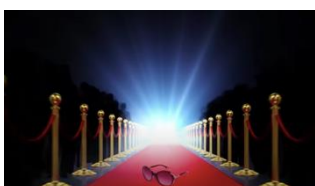


## Keeping Active

GoNoodle

Run the red carpet!  
Remember to strike a pose!

[https://www.youtube.com/watch?v=d\\_GNRDic17E](https://www.youtube.com/watch?v=d_GNRDic17E)



Rachel Shenton and Maise Sly give a fascinating and interactive introduction to British sign language.

<https://www.bbc.co.uk/programmes/m000kl4r>



Have a lovely summer holiday!

We can't wait to see you soon – stay safe!

Mrs Ball, Miss Punshon and Miss Cooper

xxx